

PRODUCT SPECIFICATIONS

Motorised background drive PRO

203S

Motorised background drive PRO is component of Ventis Motorised Background Support System. Rolls up/down a background, gives position feedback to control box, provides background suspension with a holder.

Features

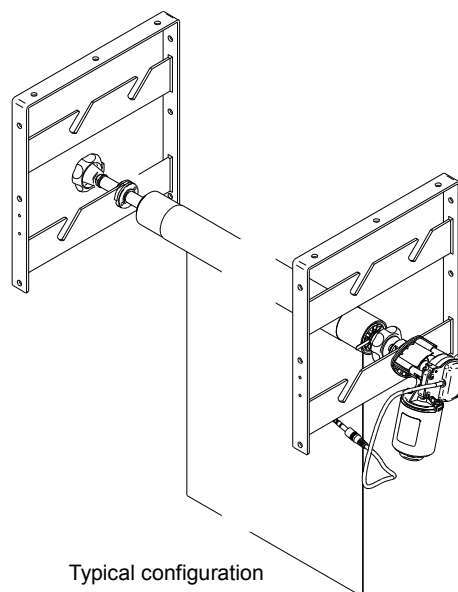
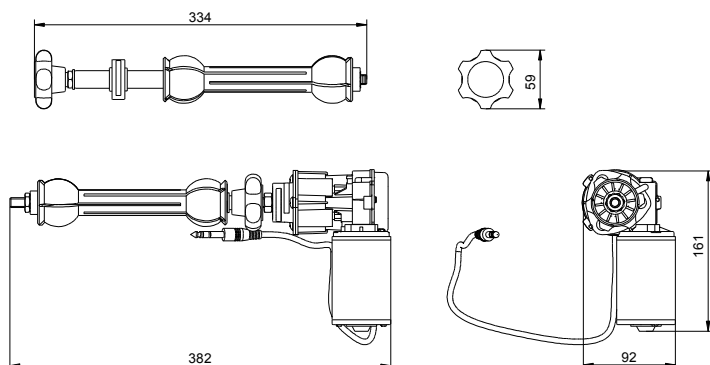
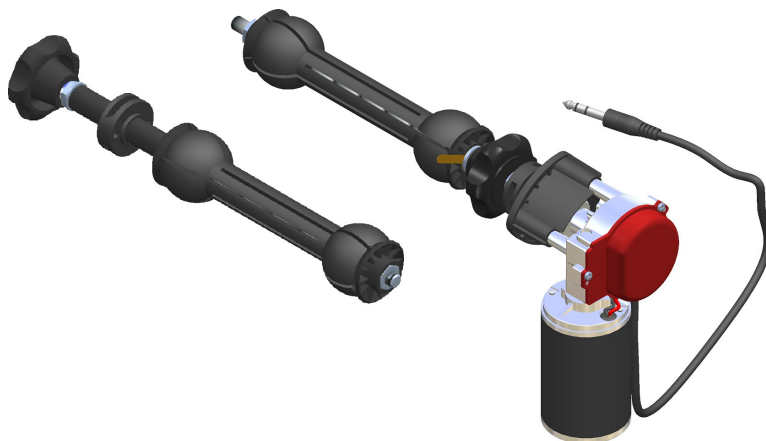
- Fast roll operation
- Heavy duty motor enabling up to 10 kg backgrounds
- Brass worm gear for reliable maintenance free operation
- Background position feedback sensor
- Easy to set-up with expandable clutch system
- Accepts wide range of background cores: diam. 50 to 72mm
- Fast and easy background exchange - no locking screws
- 1.5 mt long power supply cable
- Easy to connect to control box - just one plug
- With built-in electrostatic protection
- 100% products tested

Basic Specifications

Power supplyDC 24V
Power consumption75W max.
Nominal current.....1,5A
Holding torque min.....2,5 Nm
Max load (background weight).....10 kg
Net weight:2 kg (4,4 lbm)
Gross weight2,3 kg (5 lbm)
Working temperature range.....0°C – 40°C (32°F – 104°F)
Relative humidity.....80% max.

Dimensions

Motor (LxWxH)38x9x16cm (15x3,6x6,3")
Expan (LxWxH)33x6x6cm (13,1x2,3x2,3")
Packaged dim. (LxWxH).....45x18x9cm (17,7x7x3,5")



Related Background Lift System products:

220S 220S-110V – BLS 2.0 Control Box Pro
227 – Holder for 4 backgrounds
226 – Holder for 6 backgrounds
225 – Holder for 10 backgrounds
230US – US power supply cable
230EU – EU power supply cable

